



Inclusive Futures

Promoting disability inclusion



UKaid
from the British people

Information about people with disabilities and taking part and leading in politics



Easy read booklet Issue



Who we are



We are Social Development Direct.



We give advice to people working on **International Development** on how to include all people, such as women and people with disabilities



International Development

supports people around the world who do not have enough access to the things they need.



We work with other groups to run the Disability Inclusion Helpdesk.



This booklet is part of the **14th Helpdesk Evidence Digest**. It focuses on taking part and leading in **politics**.



Please look at the full report for links to documents or for more information.



Sometimes we need to use new or difficult words. These words are in **bold**. There is a list of what they mean at the end of the document.

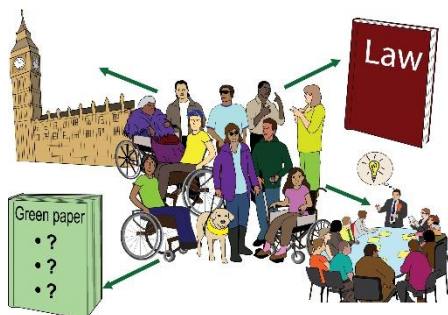
Discussion about people with disabilities and taking part and leading in politics



We spoke to Laurène Leclercq who works for Sightsavers, a charity that works on equality for people with disabilities.



Laurène told us about work Sightsavers has been doing in Cameroon and Senegal.



The project helped people with disabilities to get involved with **politics**.



Very few people with disabilities were involved in **politics** before the project started.

People with disabilities faced a lot of barriers:



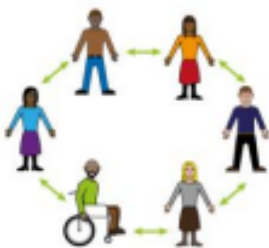
- Some people thought that people with disabilities were not able to take part in making important decisions.



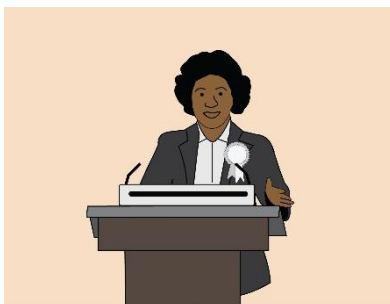
- Information on how to take part is not accessible for people with disabilities.



- In Cameroon, it is against the law for people with intellectual disabilities to **vote**.



The project worked with the government and **organisations of people with disabilities** to break these barriers.



The project supported people with disabilities to stand for **election** in local councils and parliaments.



This means that people can **vote** for them to lead make decisions in the local area.

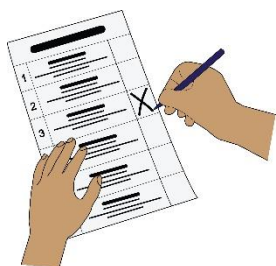


The project also helped people with disabilities get identification cards or **voter** cards.



40,000 people with disabilities are now able to **vote** in Cameroon.

Evidence and guidance on people with disabilities and political leadership



In 19 countries in Latin America and the Caribbean there are laws that stop people with disabilities from **voting**.



In Iraq, people with disabilities are often not able to **vote** because the voting process is not accessible.



In Burkina Faso, the government produced a guide on how to make **elections** more inclusive.



Research in Zambia found that negative attitudes towards people with disabilities stops people with disabilities from working in **politics**.



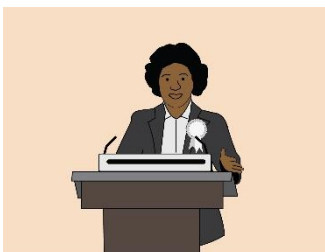
In Nepal there is little **data** on the needs of people with disabilities. This makes it harder for **politicians** to help them.



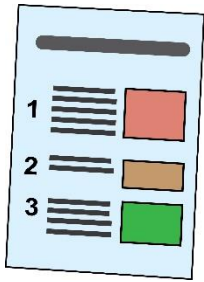
Research in Australia found that people with intellectual disabilities wanted to take help the government make decisions about their communities.



People who are blind or have visual impairments in Indonesia often did not get the information they needed to take part in **elections**.



Women leaders with disabilities in Tanzania, Ghana and Kenya play a key role in their community and stopping negative attitudes towards people with disabilities.



What do these words mean?



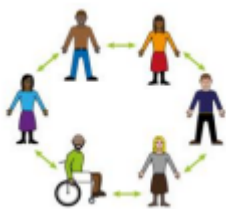
Data is information about the number of different things, such as the number of people with a disability.



Elections are when people **vote** to decide who should be a leader.



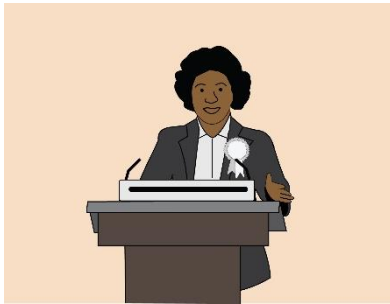
International Development supports people around the world who do not have enough access to the things they need.



Organisations of people with disabilities work around the world and support people with disabilities to live good lives.



Politics is about making decisions about how an area or a country is run.



Politicians make decisions about laws and rules on lots of different areas, like health, school, transport and work.



Research is about finding lots of information about a specific thing and bringing it all together.



Voting is telling people who you want to become a politician. This is usually done through a form.

Contact us



If you want to talk to us send an email to this address
enquiries@disabilityinclusion.org.uk

Images/Resources copyright © LYPFT



**People
First**



Images used in this document come from the People First (Self Advocacy) Picture Bank

Disability Inclusion Helpline, February 2021	
Evidence digest focus issue: Social Protection and Disability Inclusion	
Contents	
Contents	1
What they can do to help us better understand	1
The main messages and government policies on social protection	2
Key points	5
Further information	6
References	7
Prepared by	7
Prepared for	8
Disability Inclusion Helpline	8
About the Disability Inclusion Helpline	9

The full version of this document is called **Evidence Digest: Disability Inclusion and political participation and leadership**